



The BMS-S7-MSW-DC2-BLE-SR uses microwave motion detector architecture technology for improved detection coverage for ceiling or fixture mount, high bay, and low bay applications.

## OVERVIEW

- Microwave sensor.
- Bluetooth SIG mesh.
- High-End Trim, Zoning, Continuous Bi-level Dimming.
- LED Motion indicator.
- Mounting height up to 20ft(6m).
- 360° coverage pattern.
- Low Voltage connector.

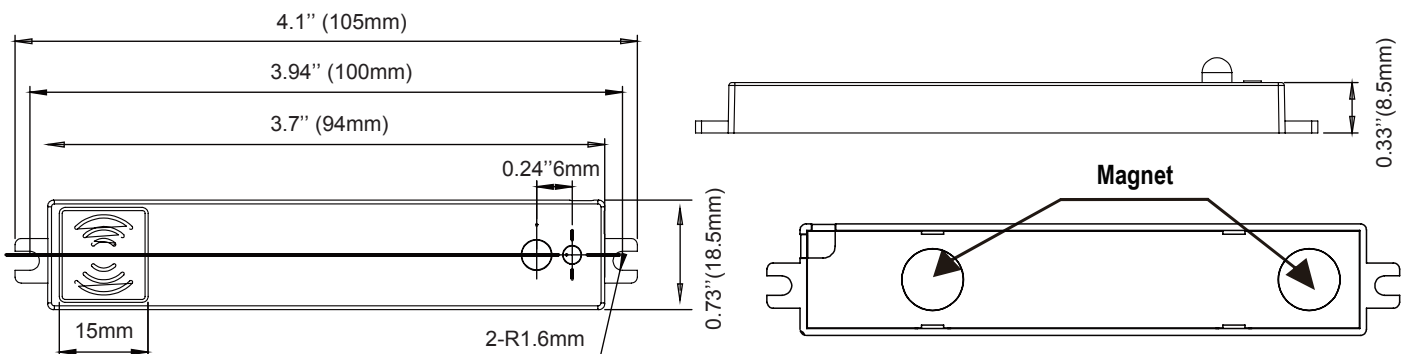
## FEATURES AND BENEFITS

- Bluetooth mesh network.
- Built-in 25mA 0-10V signal output.
- Mesh network, which has a much longer control distance, transmits received signals to neighboring devices.
- In typical outdoor environment, the typical range for wireless communication is 100ft(30m).
- Actual range is dependent on site conditions.
- Available with Magnetic reset (Touch the top part of sensor for 5 seconds).
- On-board antenna.

## TECHNICAL DATA

Motion Sensor	Microwave sensor
Input Power	10-14VDC, >50mA
Control Output	0-10V, max 25mA sinking current
HF System	5.8GHz+75MHz
Transmission power	<0.2mW
Mounting height	20ft(6m) Max.
Detection angle	360°
Operating temperature	-40°F-158°F (-40°C-70°C)
IP rating	20
Max Bluetooth Range	100ft(30m)

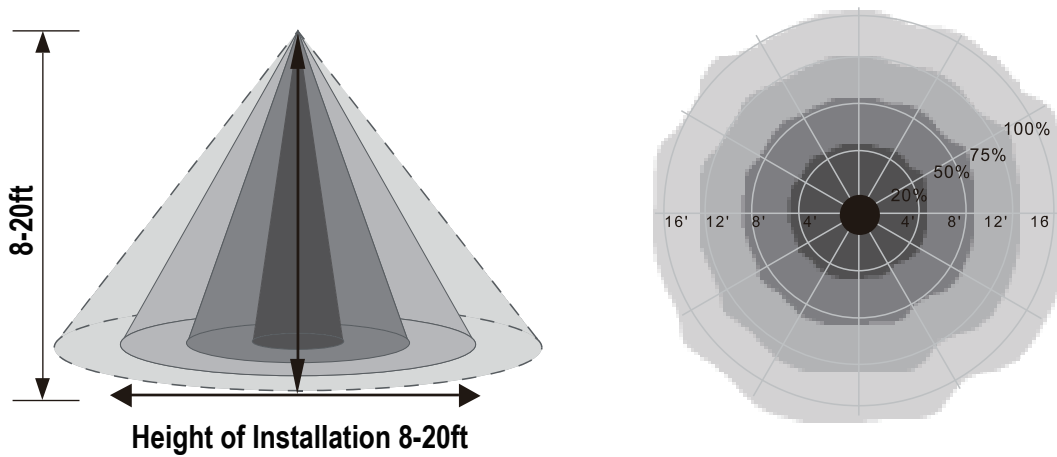
## PHYSICAL DIMENSIONS



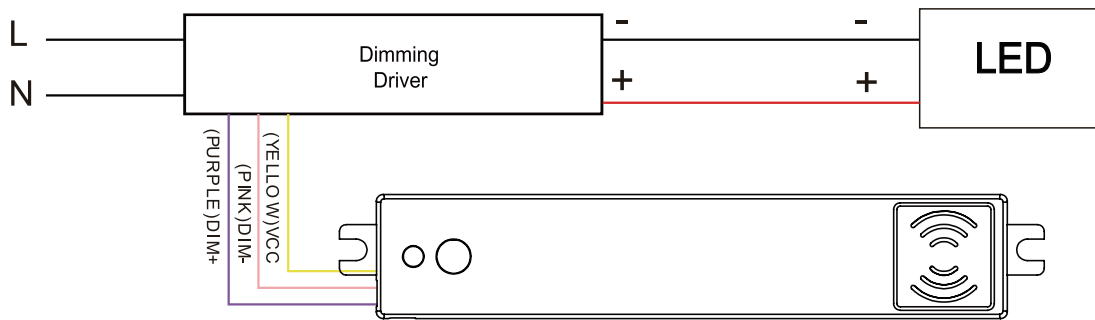
## ORDERING INFORMATION

Model No.	Description	Input Voltage	Output	Mounting
BMS-S7-MSW-DC2-BLE-SR	Bi-level Microwave (MSW) Occupancy Sensor with Bluetooth Mesh Feature	10-14VDC	0-10VDC	Magnetic Built-in Mount

## DETECTION AREA



## WIRING DIAGRAM



## WARRANTY

Five year limited warranty.

Specifications subject to change without notice.